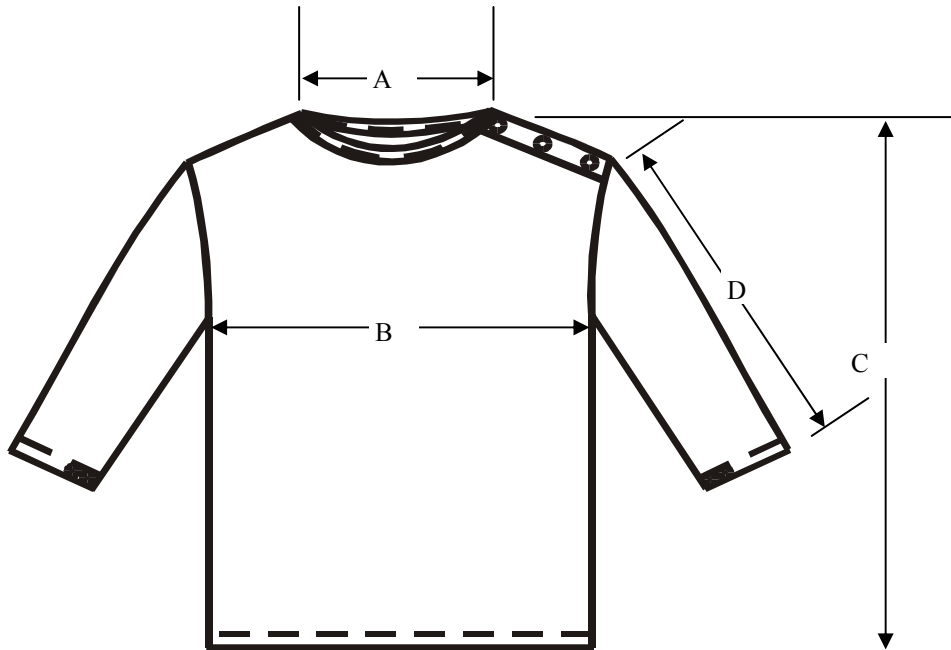




Critical Environment Solutions Ltd



SIZE	XS	S	S/M	M	L	XL	2XL	2/3XL	3XL	4XL	5XL	TOL +/-
A	6.25	6.25	6.75	6.75	6.75	7	7	7	7.25	7.25	7.25	0.5
B	22	22.5	23.5	24.5	25.5	26.5	27.5	28.5	29	30	31	0.75
C	28	28	28	28.5	28.5	28.5	30	30	30	30.5	30.5	1
D	28	28	28	28	28	28.5	28.5	28.5	28.75	28.75	28.75	0.75

**Fabric Specification**

Fabric Code	P75D
Weave	Taffeta (5mm grid)
Tensile Strength	Warp 64.7kg
ASTM D 5034 (C.R.E.) Grad Method	Weft 43.6kg
Water Vapour Permeability ASTM E 96-95 (g/m <sup>2</sup> 24hr)	14435
Air Permeability JIS 1099 ASTM S 737 Frazer Method (cm <sup>3</sup> /cm <sup>2</sup> /sec)	21.6
Water Absorption (AATCC 70-1989)	28.1

**For enquires please call 01634-731263**

**Or email [sales@cesltd.uk.com](mailto:sales@cesltd.uk.com)**